

# JAKA Zu<sup>®</sup> Series Cobots

# JAKA Zu<sup>®</sup> 3 Cobot



**Weight**  
**12kg**



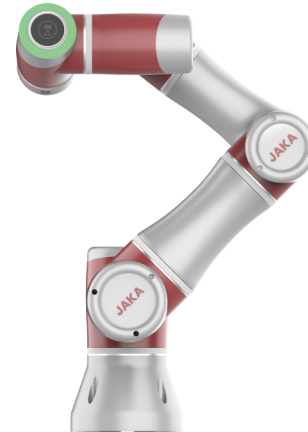
**Payload**  
**3kg**



**Working radius**  
**626mm**

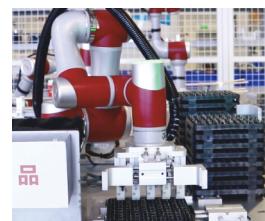


**Repeatability**  
**±0.02mm**



## Product Features

- **Lighter self-weight:** Self-weight 12kg, payload 3kg, working radius up to 626mm.
- **More flexible and portable:** Light weight design, higher efficiency, faster and more convenient customer deployment.
- **Higher precision:** Able to adapt to tight space installation, flexible production line with high precision and density requirement.



## Recommended Markets

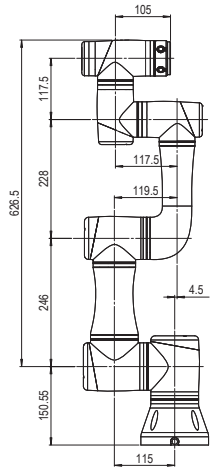
3C electronics, Medical treatments, Scientific researches,  
Injection molding

### Parameters and Layout of JAKA Zu<sup>®</sup> 3

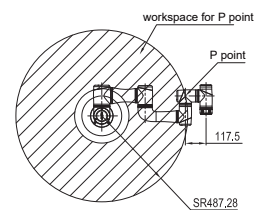
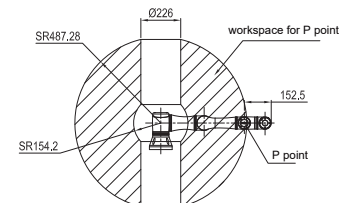
<b>Payload</b>	3kg
<b>Weight( W cable )</b>	12kg
<b>Work radius</b>	626mm
<b>Repeatability</b>	±0.02mm
<b>Axis</b>	6
<b>Programming</b>	Graphical programming, free-drive
<b>Teach pendant</b>	MT( PAD/Mobile APP
<b>Collaborative operation</b>	Accordance with GB 11291.1-2011

Robot	Work scope	Max speed
Joint 1	±360°	180°/s
Joint 2	-85°, +265°	180°/s
Joint 3	±175°	180°/s
Joint 4	-85°, +265°	220°/s
Joint 5	±360°	220°/s
Joint 6	±360°	220°/s
Max speed	/	1.5m/s

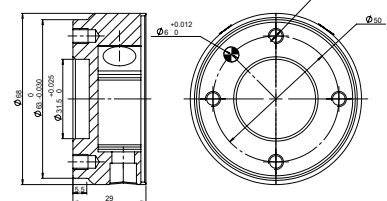
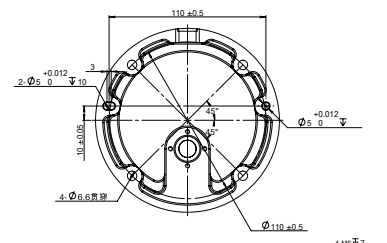
Rated power	150W
Temperature range	0-50°C
IP Specification	IP54
Installation	Installation at any angle
Tool I/O	Digital input      2
	Digital output    2
	Analog input      1
Tool I/O power	24V
Tool I/O size	M8
Materials	Aluminum, PC
base diameter	129mm
Cable length	6m



**JAKA Zu® 3 work radius**



JAKA Zu® 3 P point front view / top view



**JAKA Zu® 3 base / flange**