

# JAKA Zu<sup>®</sup> Series Cobots

## JAKA Zu<sup>®</sup> 7 Cobot



**Weight**  
22kg



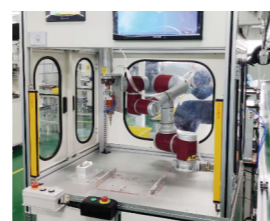
**Payload**  
7kg



**Working radius**  
819mm



**Repeatability**  
±0.02mm



### Product Features

- **Heavier payload:** Self-weight 22kg, payload 7kg, working radius up to 819mm.
- **Higher cost performance:** Good versatility and flexibility enable it to truly achieve plug-and-play, 5-minute production line layout in any production environment.
- **Higher applicability:** Multi-field applications, automotive and accessories, 3C electronic, precision manufacturing, renewable energy, medical instruments, chemical fiber and other fields of loading and unloading, detection and handling.

### Recommended Markets

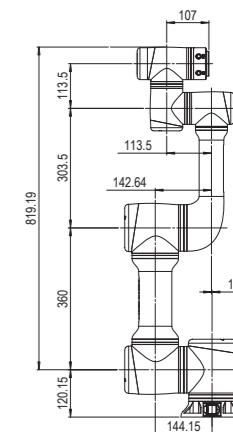
3C electronics, Medical treatments, Automotive industry, Chemical industry

### Parameters and Layout of JAKA Zu<sup>®</sup> 7

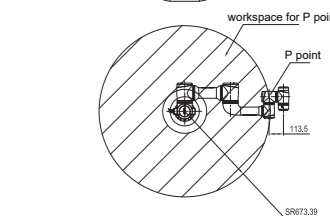
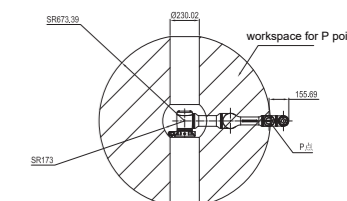
<b>Payload</b>	7kg
<b>Weight( W cable )</b>	22kg
<b>Work radius</b>	819mm
<b>Repeatability</b>	±0.02mm
<b>Axis</b>	6
<b>Programming</b>	Graphical programming, free-drive
<b>Teach pendant</b>	MT( PAD/Mobile APP
<b>Collaborative operation</b>	Accordance with GB 11291.1-2011

Robot	Work scope	Max speed
<b>Joint 1</b>	±360°	180°/s
<b>Joint 2</b>	-85°, +265°	180°/s
<b>Joint 3</b>	±175°	180°/s
<b>Joint 4</b>	-85°, +265°	180°/s
<b>Joint 5</b>	±360°	180°/s
<b>Joint 6</b>	±360°	180°/s
<b>Max speed</b>	/	2.5m/s

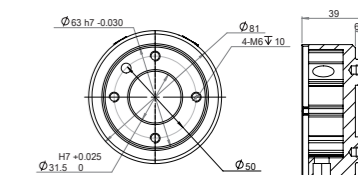
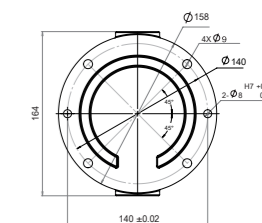
<b>Rated power</b>	350W
<b>Temperature range</b>	0-50°C
<b>IP Specification</b>	IP54
<b>Installation</b>	Installation at any angle
<b>Tool I/O</b>	Digital input 2 Digital output 2 Analog input 1
<b>Tool I/O power</b>	24V
<b>Tool I/O size</b>	M8
<b>Materials</b>	Aluminum, PC
<b>base diameter</b>	158mm
<b>Cable length</b>	6m



JAKA Zu<sup>®</sup> 7 work radius



JAKA Zu<sup>®</sup> 7 P point front view / top view



JAKA Zu<sup>®</sup> 7 base / flange